

**CARNAHAN · PROCTOR · CROSS, INC.**

CONSULTING ENGINEERS · SURVEYORS · PLANNERS

6101 WEST ATLANTIC BOULEVARD, MARGATE, FLORIDA 33063  
PHONE: 954-972-3959 FAX: 954-972-4178

AUGUST 2002

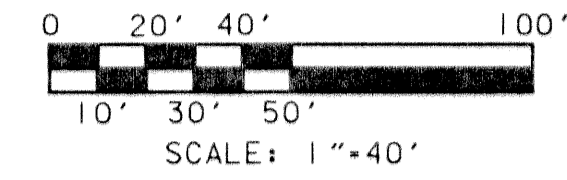
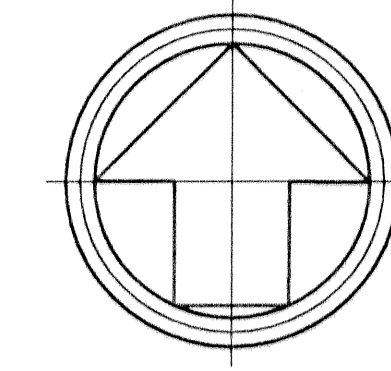
991010

JJM

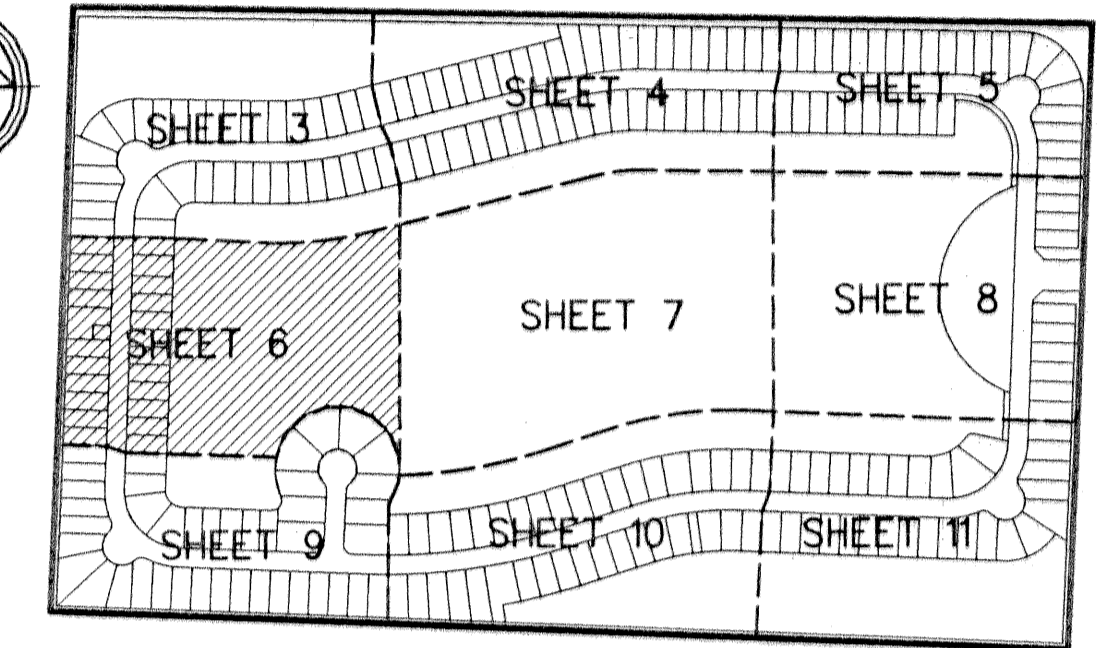
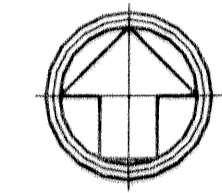
ANTHONY GROVES P.U.D.

# ANTHONY GROVES PHASE 2

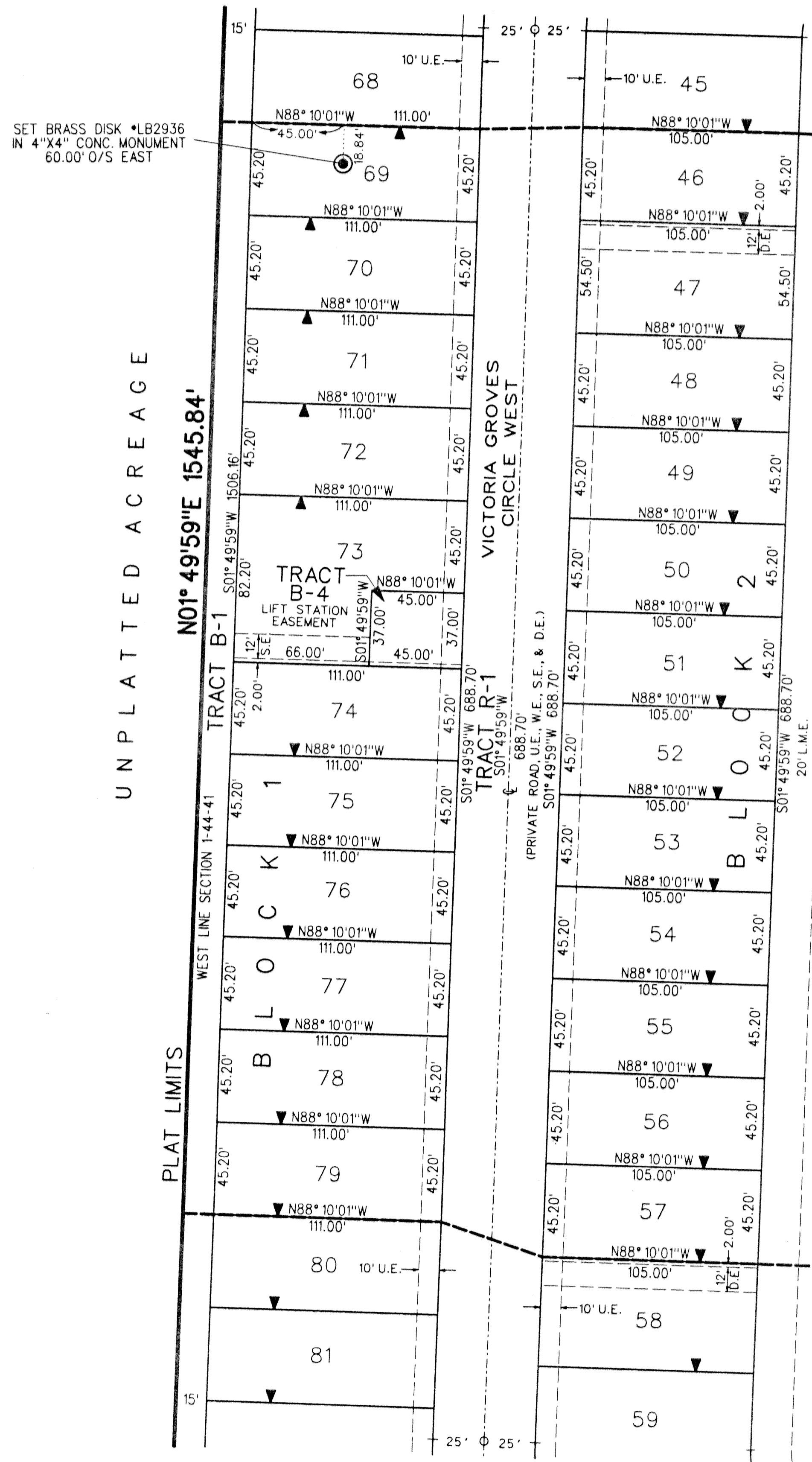
A PORTION OF SECTION 1, TOWNSHIP 44 SOUTH, RANGE 41 EAST,  
VILLAGE OF ROYAL PALM BEACH, PALM BEACH COUNTY, FLORIDA



SHEET 6 OF 11



KEY MAP  
N.T.S.

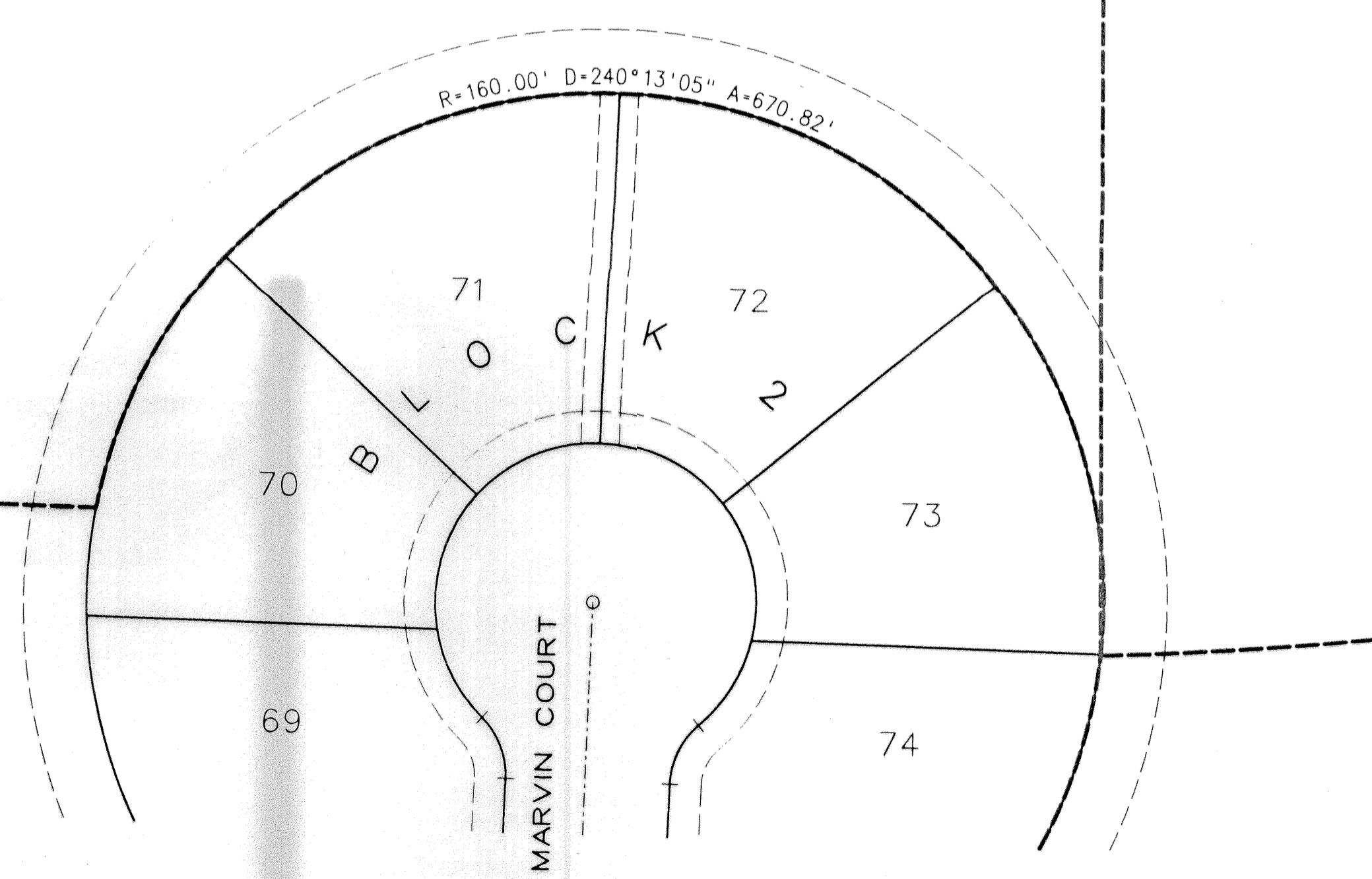


(SEE SHEET 3)  
MATCH LINE

TRACT L-1  
(WATER MANAGEMENT TRACT)  
TO BE MAINTAINED BY THE  
VICTORIA GROVE  
HOMEOWNERS ASSOCIATION, INC.

MATCH LINE  
(SEE SHEET 7)

MATCH LINE  
(SEE SHEET 9)



- LEGEND:**
- - SET PERMANENT REFERENCE MONUMENT (P.R.M.) \*LB2936 UNLESS OTHERWISE NOTED
  - - PERMANENT CONTROL POINT (P.C.P.)
  - ▼ - ZERO LOT SIDE
  - ⊙ - CENTERLINE
  - A - ARC LENGTH
  - C.B. - CHORD
  - D - CHORD BEARING
  - D.Δ - DELTA (CENTRAL ANGLE)
  - D.E. - DRAINAGE EASEMENT
  - L.A.E. - LIMITED ACCESS EASEMENT
  - L.M.A.E. - LAKE MAINTENANCE ACCESS EASEMENT
  - L.M.E. - LAKE MAINTENANCE EASEMENT
  - L.S.E. - LIFT STATION EASEMENT
  - L.W.D.D. - LAKE WORTH DRAINAGE DISTRICT
  - N.R. - NON-RADIAL
  - O.R.B. - OFFICIAL RECORDS BOOK
  - PG. - PAGE
  - P.B. - PLAT BOOK
  - P.B.C.R. - PALM BEACH COUNTY RECORDS
  - P.O.B. - POINT OF BEGINNING
  - P.O.C. - POINT OF COMMENCEMENT
  - P.U.D. - PLANNED UNIT DEVELOPMENT
  - R - RADIUS
  - R/W - RIGHT-OF-WAY
  - SE - SEWER EASEMENT
  - SF - SQUARE FEET
  - U.E. - UTILITY EASEMENT

UNPLATTED ACREAGE

NO1° 49' 59" E 1545.84'

WEST LINE SECTION 1-44-41

PLAT LIMITS

VICTORIA GROVES  
CIRCLE WEST

TRACT R-1

(PRIVATE ROAD U.E. W.E. S.E. & D.E.)

TRACT B-4

LIFT STATION EASEMENT

TRACT L-1

(WATER MANAGEMENT TRACT)

TO BE MAINTAINED BY THE

VICTORIA GROVE

HOMEOWNERS ASSOCIATION, INC.

TRACT B-4

LIFT STATION EASEMENT